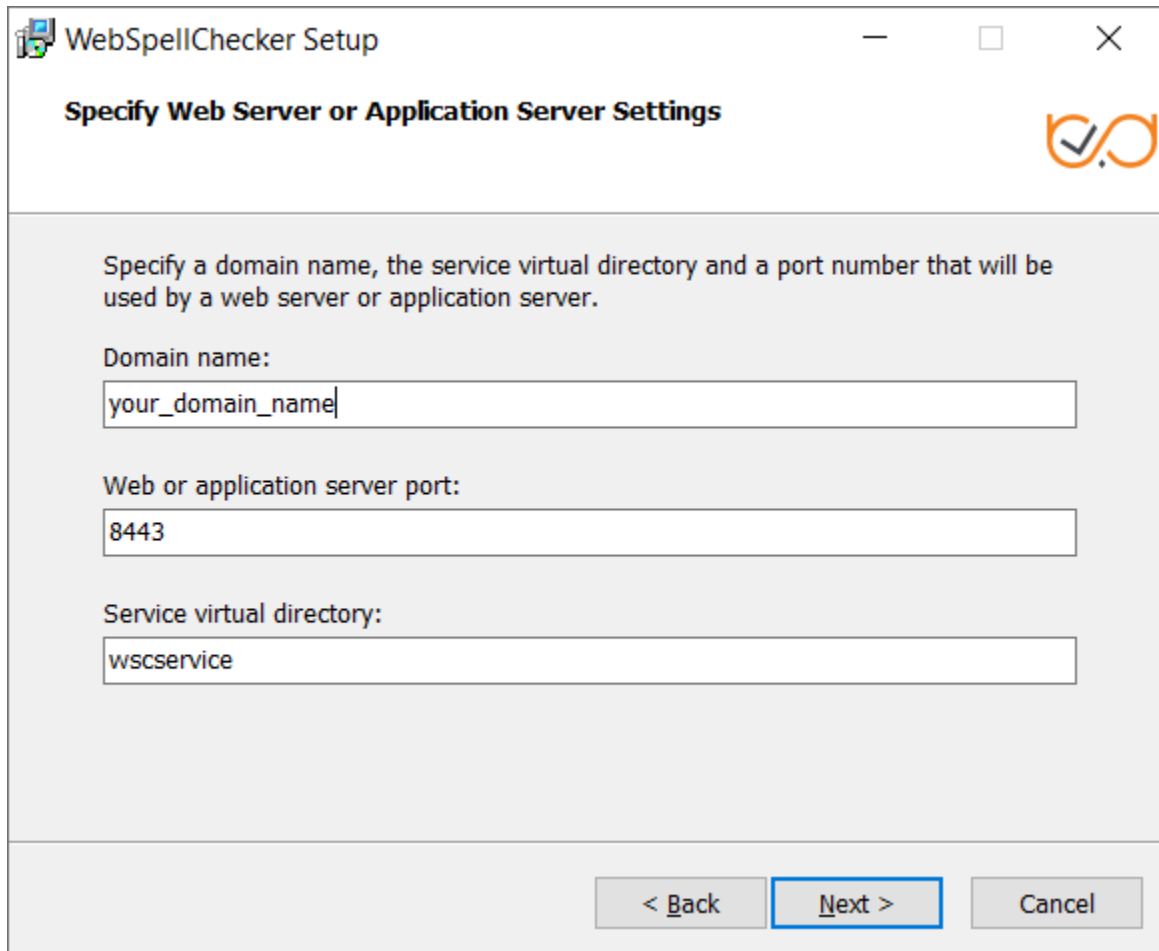


_include_wsc55x_server_install_application_from_serviceURL_to_finish_apache_tomcat_windows

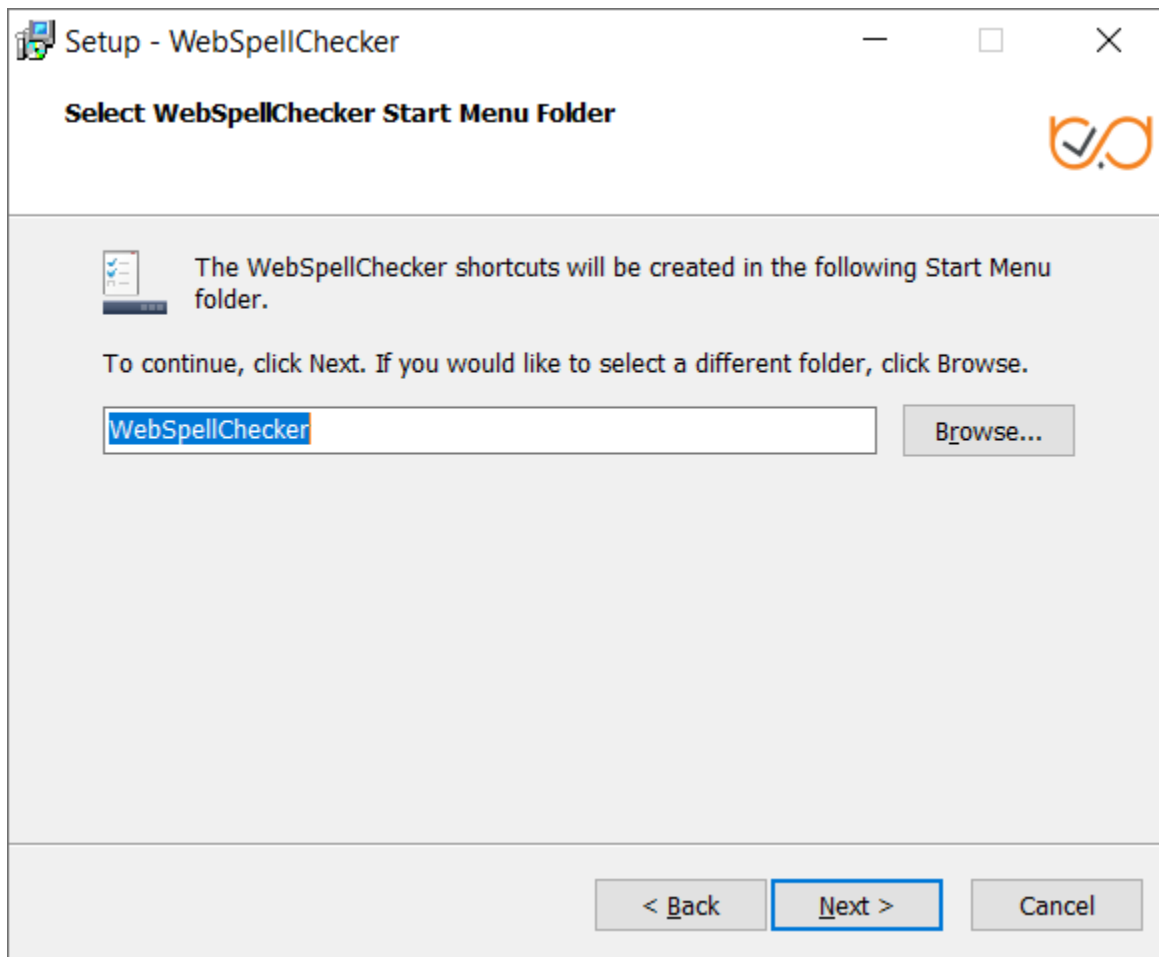
2.9. Define settings of the selected Java application server and click **Next** to proceed.

- Specify a domain name (e.g. localhost).
- Specify a port number of a Java application server. The installer will suggest the port number based on the specified protocol and selected Java application server. The default ports for Java application servers are 8080 for HTTP and 8443 for HTTPS protocols.

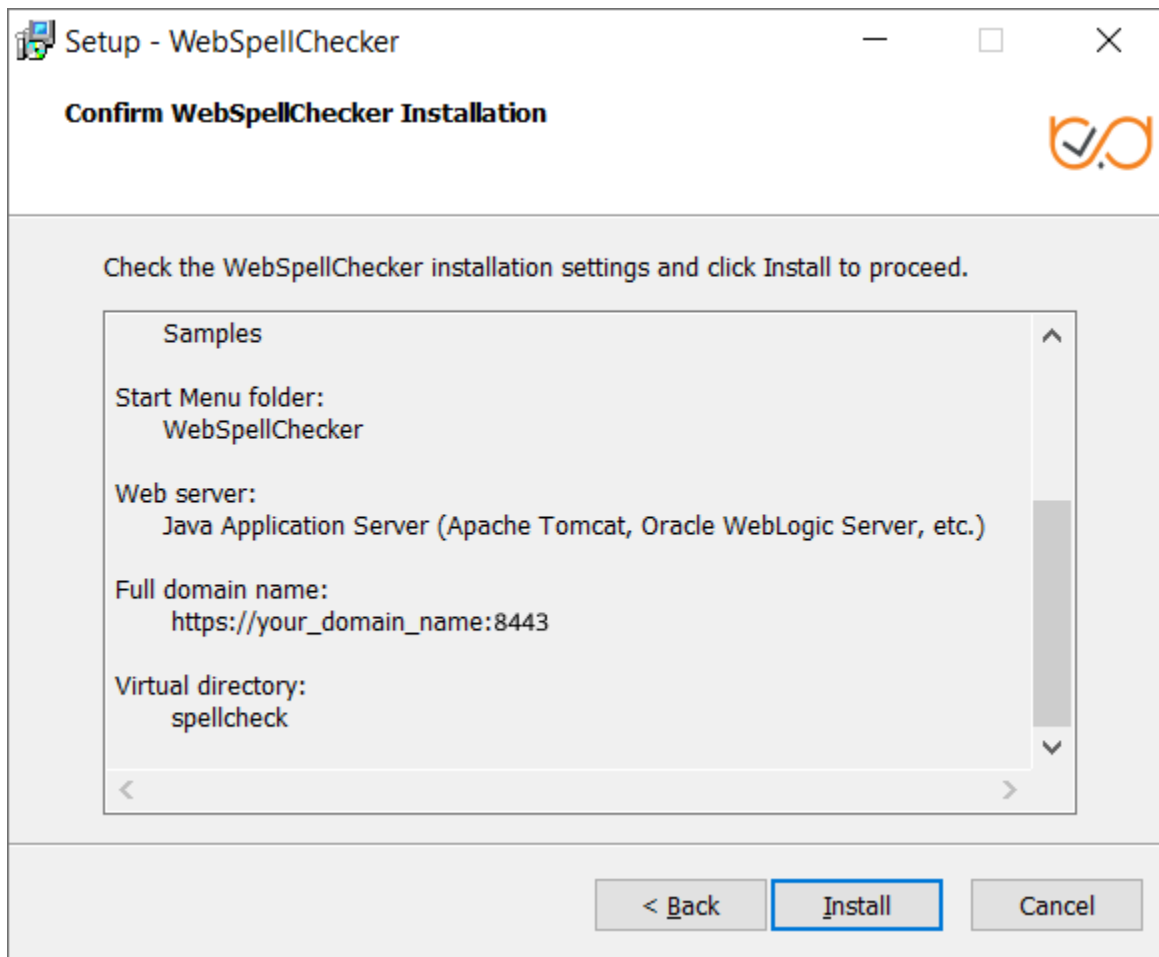
Provide the name of the virtual directory for WebSpellChecker service. The default value is **wscservice**.

The image shows a Windows installer window titled "WebSpellChecker Setup". The window has a standard Windows title bar with minimize, maximize, and close buttons. Below the title bar, the text "Specify Web Server or Application Server Settings" is displayed in bold. To the right of this text is a logo consisting of a stylized orange 'W' and 'S' with a checkmark. The main area of the window contains three text input fields. The first field is labeled "Domain name:" and contains the text "your_domain_name". The second field is labeled "Web or application server port:" and contains the text "8443". The third field is labeled "Service virtual directory:" and contains the text "wscservice". At the bottom of the window, there are three buttons: "< Back", "Next >", and "Cancel". The "Next >" button is highlighted with a blue border.

2.10. Select WebSpellChecker **Start Menu folder** and type a program name which will be used as a Start Menu item and click **Next** to proceed.



2.11. On this step the installer summarizes the information that you have entered on the previous steps. Click **Install** to proceed with the installation process or return to previous steps if you want to make any changes.



2.12. As soon as the installation process is finished, select **Activate License** if you are installing WebSpellChecker Server for the first time and then click **Finish** to close the installation dialog. You can view the samples and verify application operability in newly opened web browser tabs, namely Samples page, a page with Status check, and a page with Version check. Note that all these options are selected by default. The **Activate License** option is not selected only if you reinstall WebSpellChecker on the same server.

Complete Installation

WebSpellChecker has been successfully installed on the server. The application may be launched from Windows Start Menu folder.

1. Activate License and Start WebSpellChecker Application Server (Skip if already done).
2. Check the application version and status to confirm if the Spell Check, Grammar and Thesaurus engines are Active.
3. Open Demo Samples to learn more how integrate and configure the WebSpellChecker products.

- ☐ Activate License
- ☒ Run WebSpellChecker Application Server
- ☒ Check Application Status and Version
- ☒ Open WebSpellChecker Demo Samples

Finish