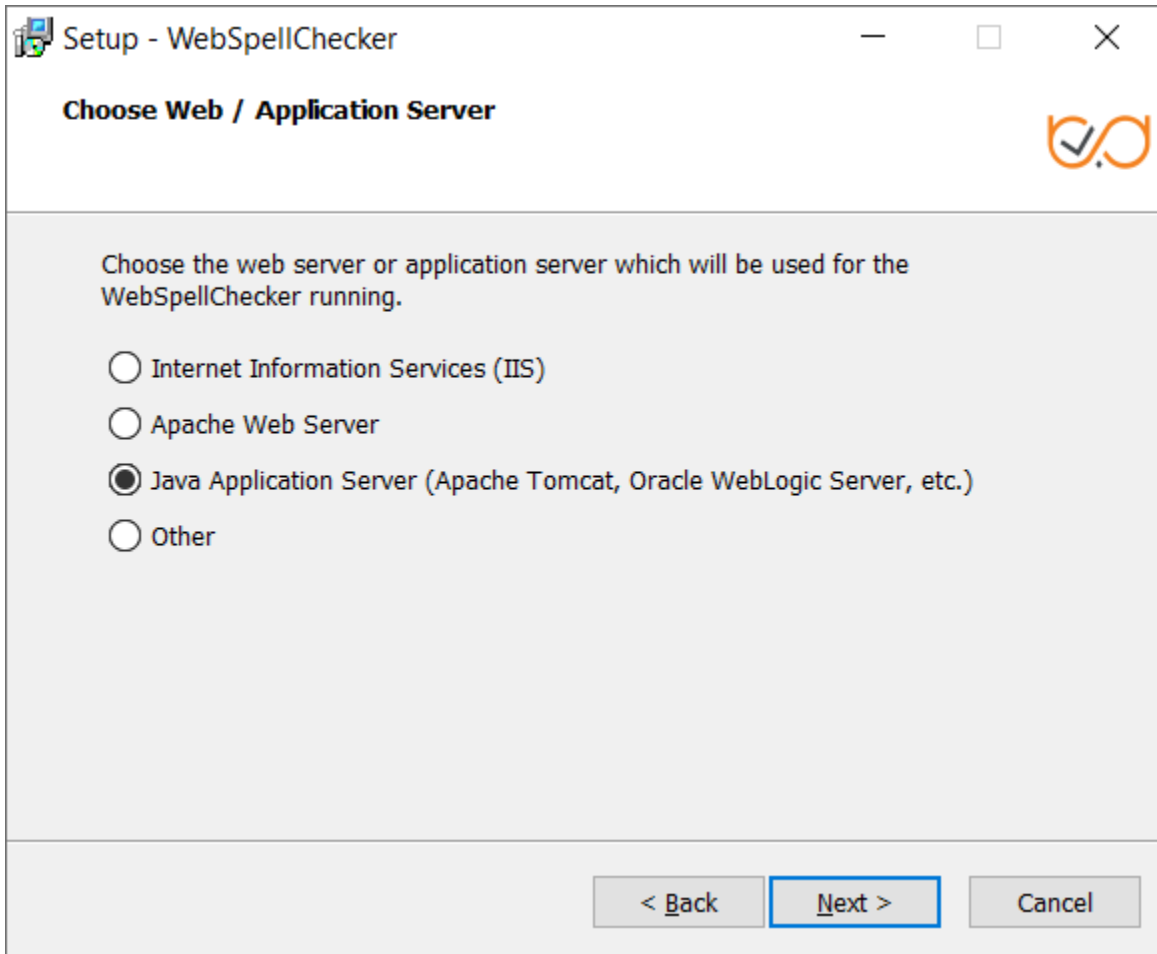


# \_include\_wsc553\_server\_apache\_tomcat\_application\_server\_windows

2.7. Select **Java Application Server (Apache Tomcat, Oracle WebLogic Server, etc.)** as a Java application server and configure its settings.



Setup - WebSpellChecker

Choose Web / Application Server

Choose the web server or application server which will be used for the WebSpellChecker running.

☐ Internet Information Services (IIS)

☐ Apache Web Server

☒ Java Application Server (Apache Tomcat, Oracle WebLogic Server, etc.)

☐ Other

< Back Next > Cancel



This section outlines the details of wscservice.war deployment on Apache Tomcat (static files and all requests to engines are served) or binding only static files and the rest of the service requests such as spelling or grammar checking, directly connecting with AppServer.

## Option A: Binding of Static Files and Serving Service Requests by AppServer

To bind only static files and the rest of the service requests such as spelling or grammar checking directly connecting with AppServer:

1. Stop Apache Tomcat before modifying the configuration files.
2. Add the following paths to the **server.xml** file inside the **<Host name="localhost" appBase="webapps" unpackWARs="true" autoDeploy="true">** tag:

```
<Context docBase="C:/Program Files/WebSpellChecker/WebComponents/WebInterface" path="/wscservice" />
<Context docBase="C:/Program Files/WebSpellChecker/WebComponents/Samples" path="/wscservice/samples" />
```

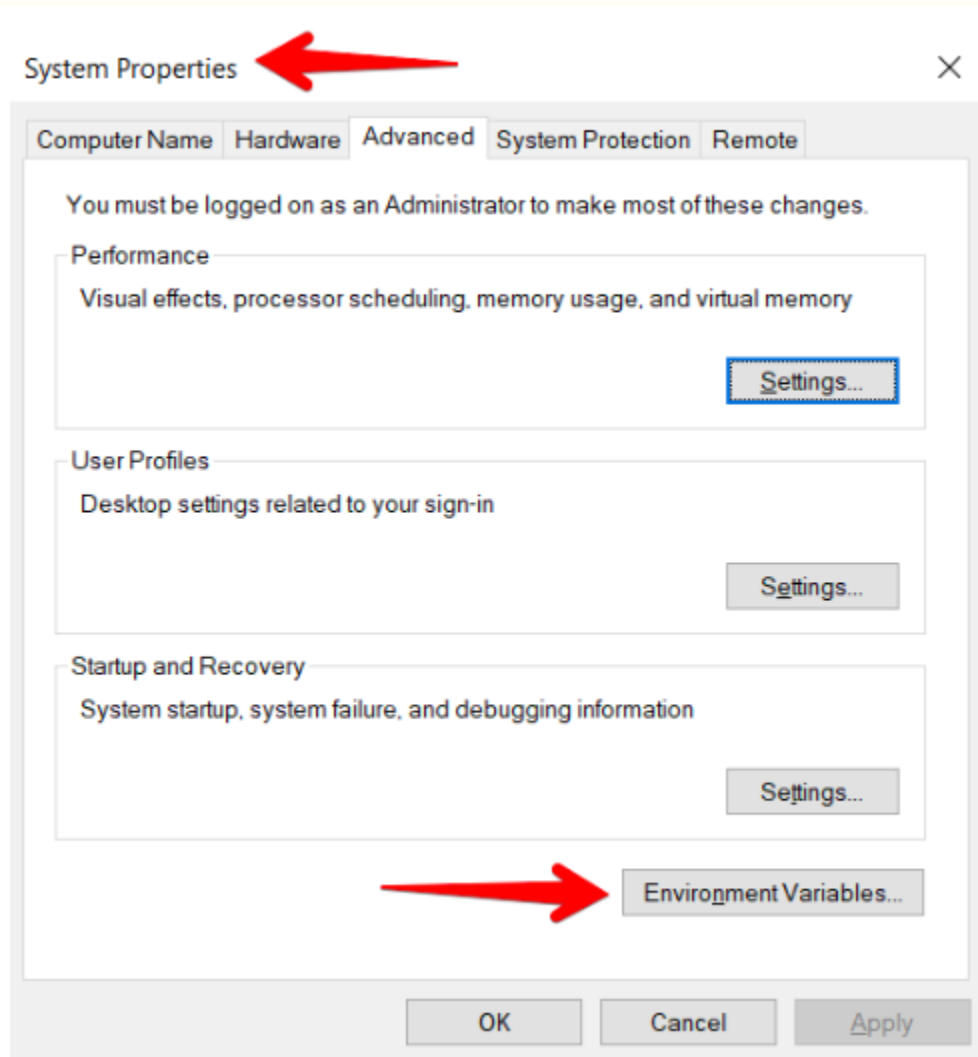
3. If you plan to host WebSpellChecker and your web app(s) on different domains, you might face the CORS issues. To avoid this, add the **Access-Control-Allow-Headers** to enable cross-origin requests to the Apache Tomcat settings. For this you can use [CORS filter](#).
4. Start Apache Tomcat after modifying the configuration files.

## Option B: Serving both Static Files and Service Requests by Java Application Server (deployment of wscservice.war)

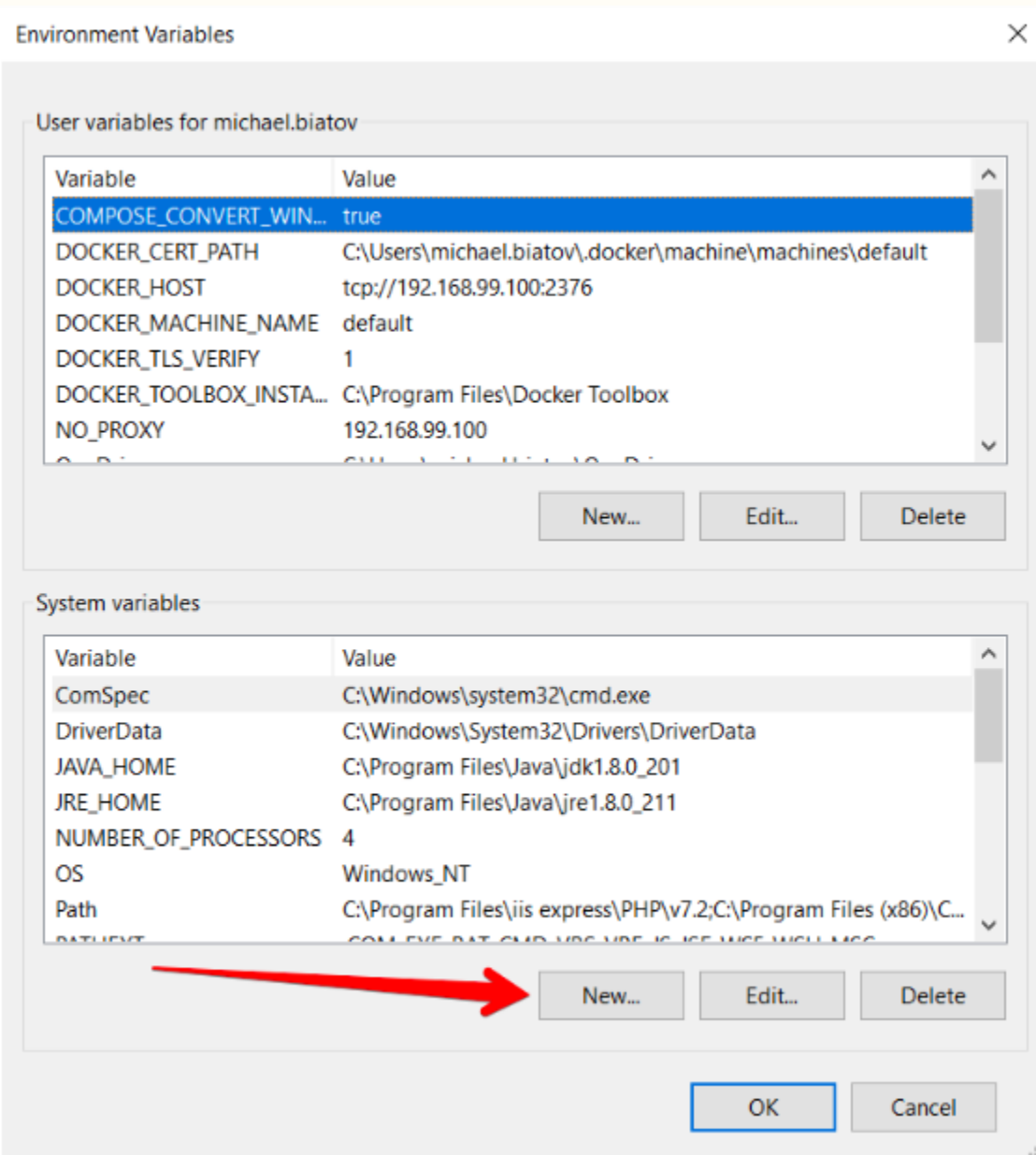
To deploy **wscservice.war** on Apache Tomcat for binding static files and all service requests to engines such as spelling or grammar checking:

1. Create the **WSC\_DIR** environment variable. It must be pointed to the WebSpellChecker Server installation directory.

- Go to Apache Tomcat System Properties. Open the **Advanced** tab. In this tab, locate the **Environment Variables...** button.



- Go to the section with **System variables**. In this section, click **New...** to create a new variable.



- A new pop-up window **New System Variable** will be open. Type a variable name and variable value as follows:

New System Variable

Variable name: WSC\_DIR

Variable value: C:\Program Files\WebSpellChecker\

Browse Directory... Browse File... OK Cancel

2. Deploy **wscservice.war** on your Apache Tomcat Application Server.

- Copy the **wscservice.war** file from <WSC\_DIR>/J2EEServerComponents to the Apache Tomcat **/webapps** directory.
- Start Apache Tomcat, or stop and then start if it is already running.



Note that the **wscservice.war** file should be unpacked automatically. Otherwise, unpack it manually.