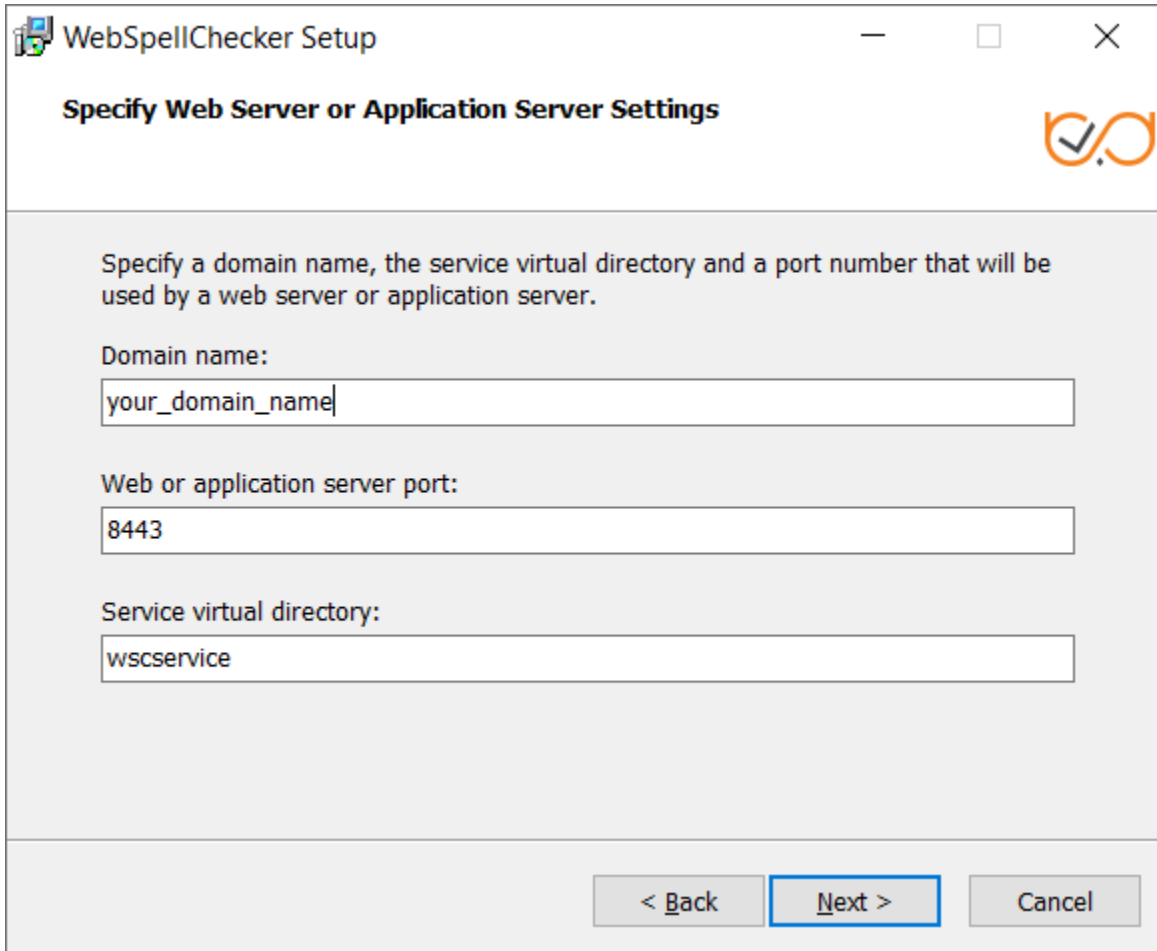


# \_include\_wsc553\_server\_install\_application\_from\_serviceURL\_to\_finish\_apache\_tomcat\_windows

2.8. Define settings of the selected Java application server and click **Next** to proceed.

- Specify a domain name (e.g. localhost).
- Specify a port number of a Java application server. The installer will suggest the port number based on the specified protocol and selected Java application server. The default ports for Java application servers are 8080 for HTTP and 8443 for HTTPS protocols.

Provide the name of the virtual directory for WebSpellChecker service. The default value is **wscservice**.



The image shows a Windows installer window titled "WebSpellChecker Setup". The window has a standard Windows title bar with minimize, maximize, and close buttons. Below the title bar, the text "Specify Web Server or Application Server Settings" is displayed in bold. To the right of this text is a logo consisting of a checkmark inside a circle. The main area of the window contains three text input fields. The first field is labeled "Domain name:" and contains the text "your\_domain\_name". The second field is labeled "Web or application server port:" and contains the text "8443". The third field is labeled "Service virtual directory:" and contains the text "wscservice". At the bottom of the window, there are three buttons: "< Back", "Next >", and "Cancel". The "Next >" button is highlighted with a blue border.

WebSpellChecker Setup

**Specify Web Server or Application Server Settings**

Specify a domain name, the service virtual directory and a port number that will be used by a web server or application server.

Domain name:

your\_domain\_name

Web or application server port:

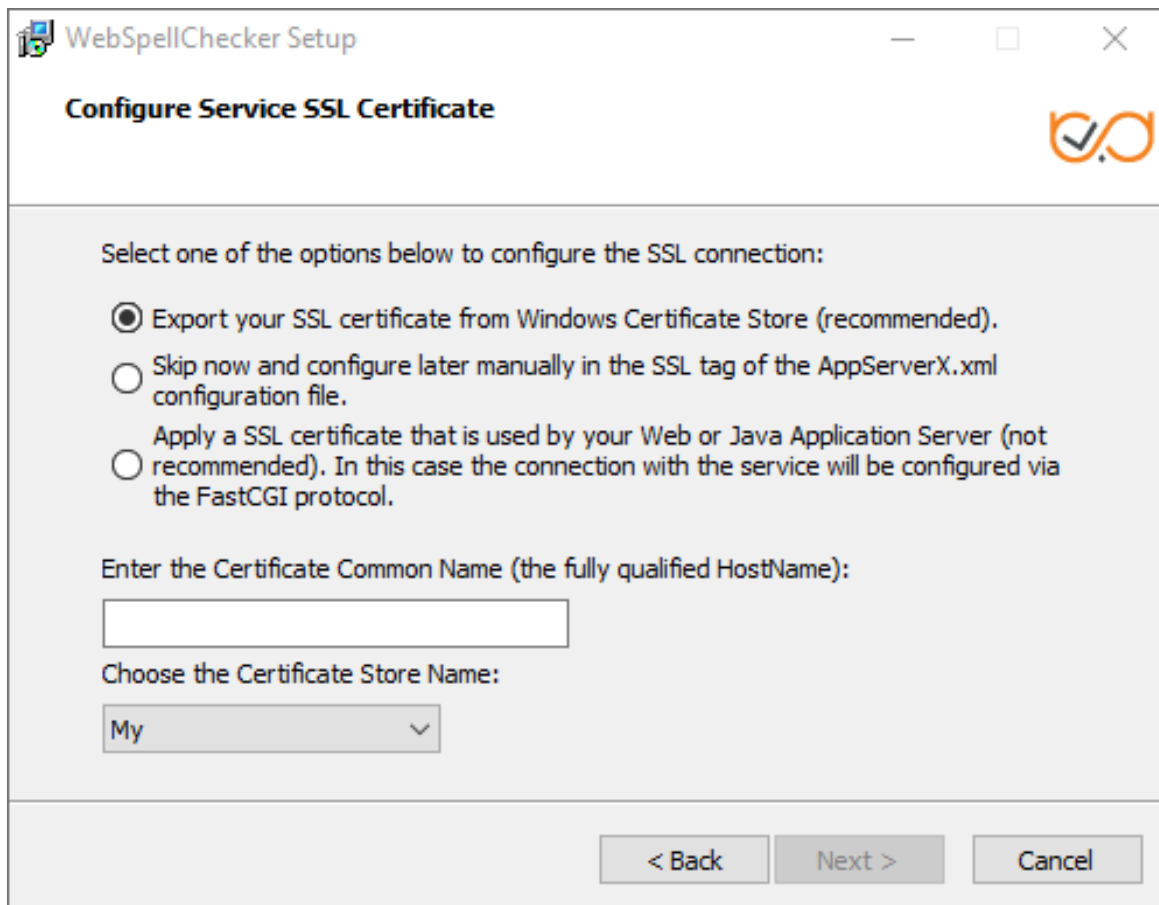
8443

Service virtual directory:

wscservice

< Back   Next >   Cancel

2.9. If you have selected HTTPS on the step with the protocol type, you need to configure SSL connection. When configuring Service SSL certificate, choose one of the available options:



**WebSpellChecker Setup**

**Configure Service SSL Certificate**

Select one of the options below to configure the SSL connection:

- ☒ Export your SSL certificate from Windows Certificate Store (recommended).
- ☐ Skip now and configure later manually in the SSL tag of the AppServerX.xml configuration file.
- ☐ Apply a SSL certificate that is used by your Web or Java Application Server (not recommended). In this case the connection with the service will be configured via the FastCGI protocol.

Enter the Certificate Common Name (the fully qualified HostName):

Choose the Certificate Store Name:

My

< Back   Next >   Cancel

### Option 1: Export your SSL certificate from Windows Certificate Store

When choosing to export SSL certificate from **Windows Certificate Store** which is a Windows-native certificate store, make sure you have specified a fully **qualified HostName** (also Common Name) and selected a proper store name. You need to select one of reserved certificate store names:

- MY = Personal
- Root = Trusted Root Certification Authorities
- Trust = Enterprise Trust
- CA = Intermediate Certification Authorities
- USERDS = Active Directory User Object

For details, refer to Microsoft official website [certificate stores description](#). If you are still having a hard time to define the correct Common Name and Store Name of your certificate, check this [Importing SSL certificate to IIS store](#) guide.

### Option 2: Skip now and configure manually in the SSL tag of the AppServerX.xml configuration file

If you choose to configure SSL connection manually in the SSL tag parameters of AppServerX.xml file. There are two ways available: using **STORE** (Windows Certificate Store) or **FILE** specifying a [path to an SSL certificate file](#) (\*.pfx file).

### Option 3: Apply an SSL Certificate that is used by your Web or Java Application Server.



Select this option if you plan to use WSC Dialog plugin for CKEditor 4. After you have selected this option, FastCGI module should be properly configured later, and the certificate information is obtained from the Web or Java Application Server.

If you choose to apply an SSL Certificate that is used by your web or Java application server, your connection configuration takes place using FastCGI protocol. Thus, you enable scenario B of [WebSpellChecker Architecture diagram](#) when FastCGI proxies service requests before AppServer.

If for some reason the installer fails to connect the selected certificate from your Windows Certificate Store, the following error occurs:

WebSpellChecker Setup

### Configure Service SSL Certificate

Error! Failed to export the SSL certificate from Windows Certificate Store. Please recheck if the specified SSL certificate Common Name is correct and your certificate is valid.

Enter the Certificate Common Name (the fully qualified HostName):

Choose the Certificate Store Name:

MY

☐ Skip now and configure later manually in the SSL tag of the AppServerX.xml configuration file.

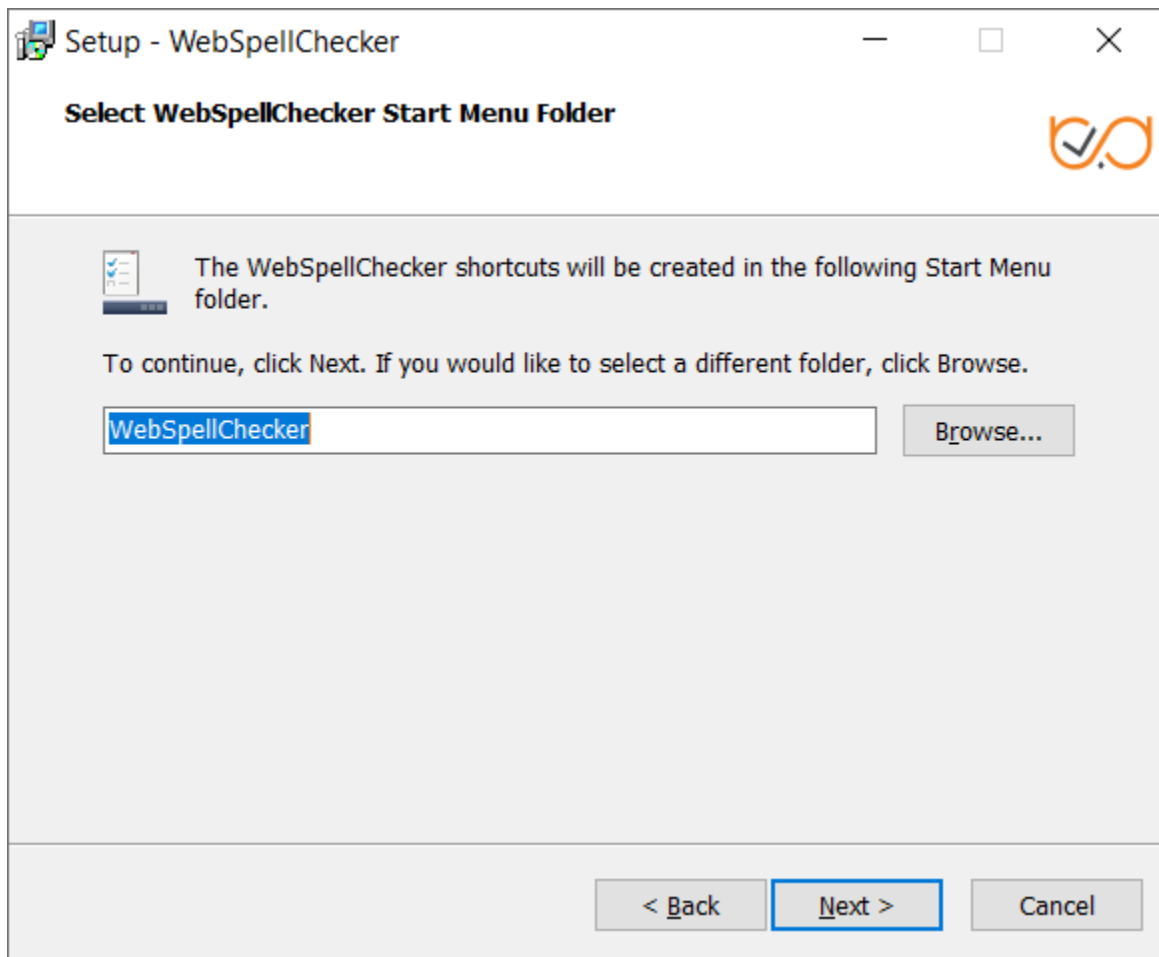
Next >

You can either try to type the certificate common name and select a proper Certificate Store Name or skip this option and provide the information later using the [SSL tag values](#) of the AppServerX.xml file.

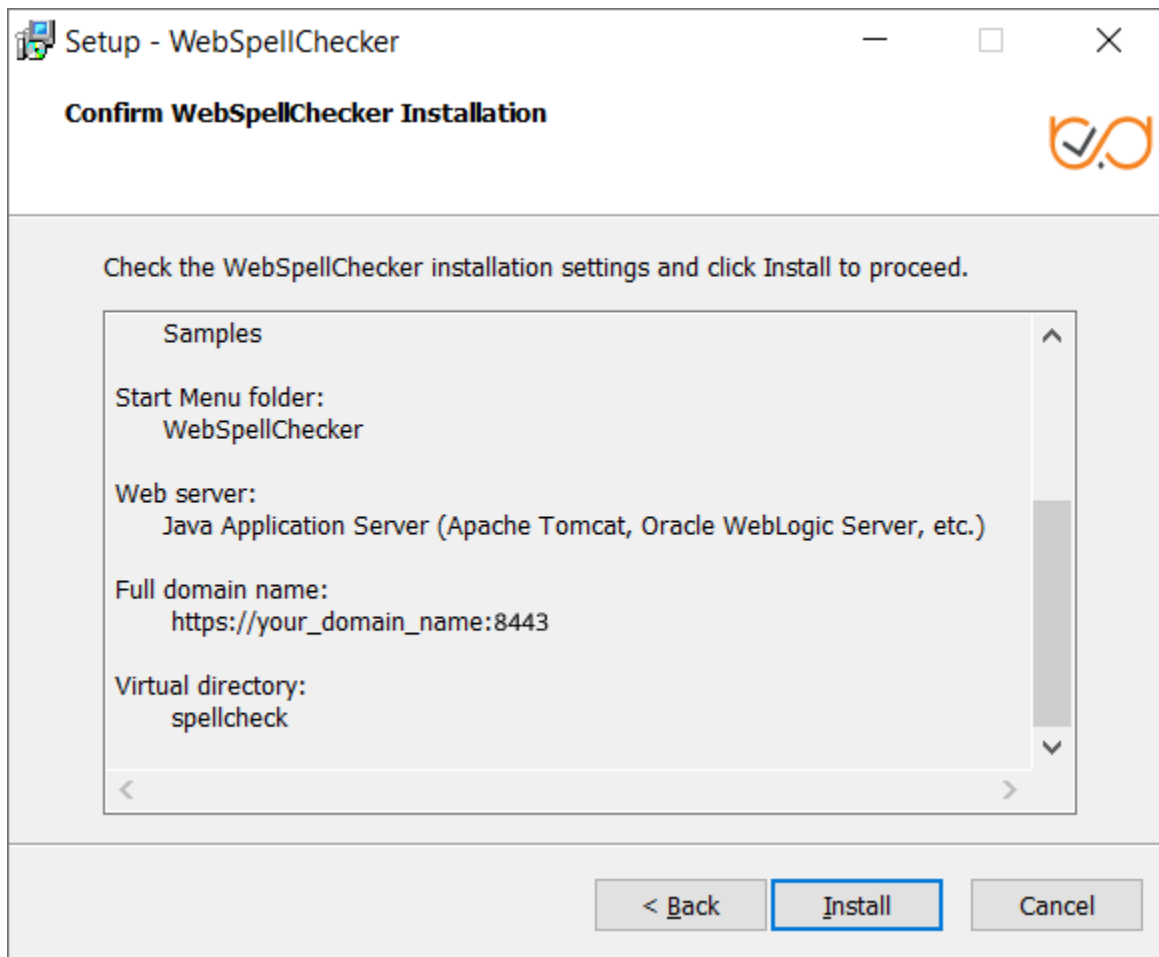


For more details, refer to Microsoft [Certificate Store](#) description and [AppServer SSL parameters](#) description.

2.10. Select WebSpellChecker **Start Menu folder** and type a program name which will be used as a Start Menu item and click **Next** to proceed.



2.11. On this step the installer summarizes the information that you have entered on the previous steps. Click **Install** to proceed with the installation process or return to previous steps if you want to make any changes.



2.12. As soon as the installation process is finished, select **Activate License** if you are installing WebSpellChecker Server for the first time and then click **Finish** to close the installation dialog. You can view the samples and verify application operability in newly opened web browser tabs, namely Samples page, a page with Status check, and a page with Version check. Note that all these options are selected by default. The **Activate License** option is not selected only if you reinstall WebSpellChecker on the same server.

## Complete Installation

WebSpellChecker has been successfully installed on the server. The application may be launched from Windows Start Menu folder.

1. Activate License and Start WebSpellChecker Application Server (Skip if already done).
2. Check the application version and status to confirm if the Spell Check, Grammar and Thesaurus engines are Active.
3. Open Demo Samples to learn more how integrate and configure the WebSpellChecker products.

- ☐ Activate License
- ☒ Run WebSpellChecker Application Server
- ☒ Check Application Status and Version
- ☒ Open WebSpellChecker Demo Samples

Finish