

_include_wsc553_server_install_application_from_location_to_webserver_setting_windows_apache_tomcat



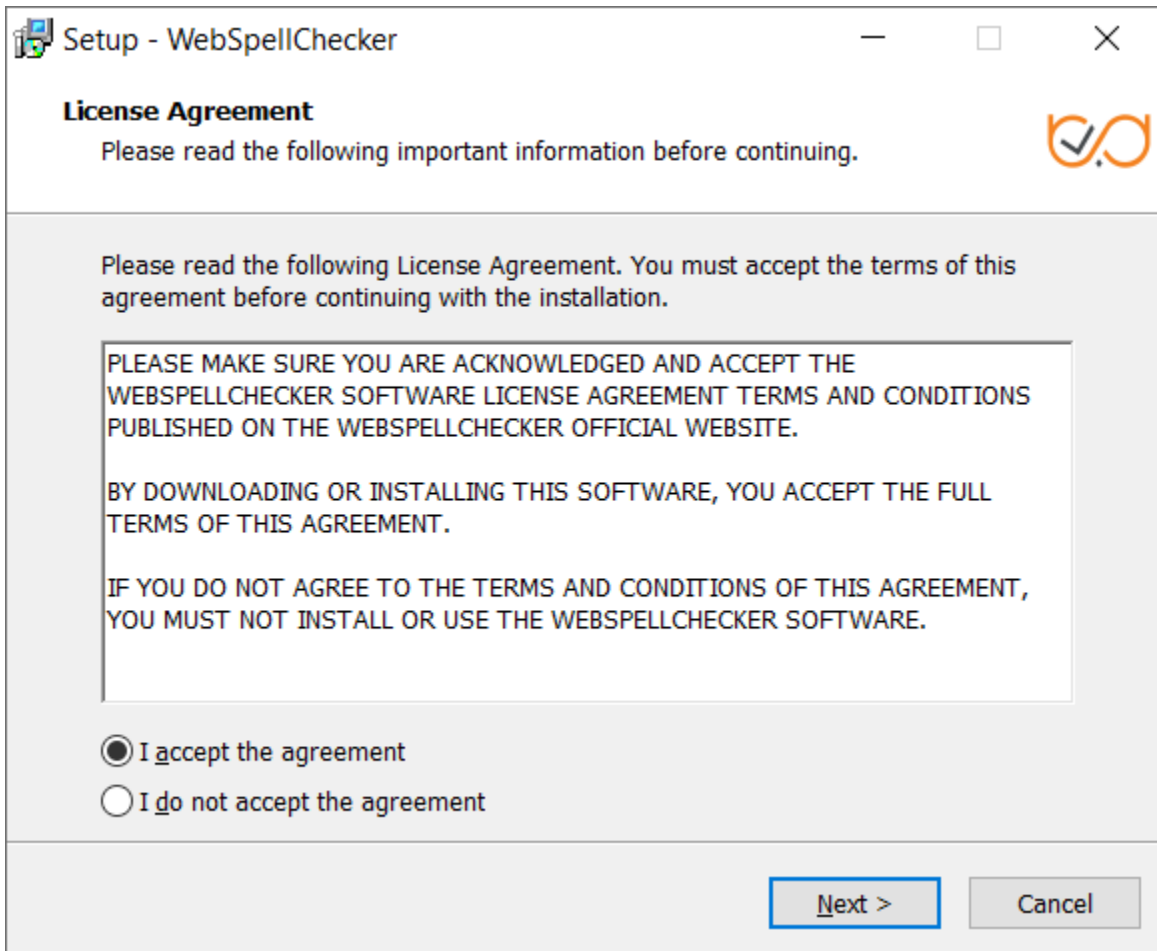
Follow the instructions in the setup window, selecting the options that are appropriate to your environment. It is recommended that you install the AppServer as a service. To do so, select the **Install Application Server as service** checkbox.

2.1. Run the installation package (e.g. wsc_app_win_x64_release_5.5.x.x_xx.exe).

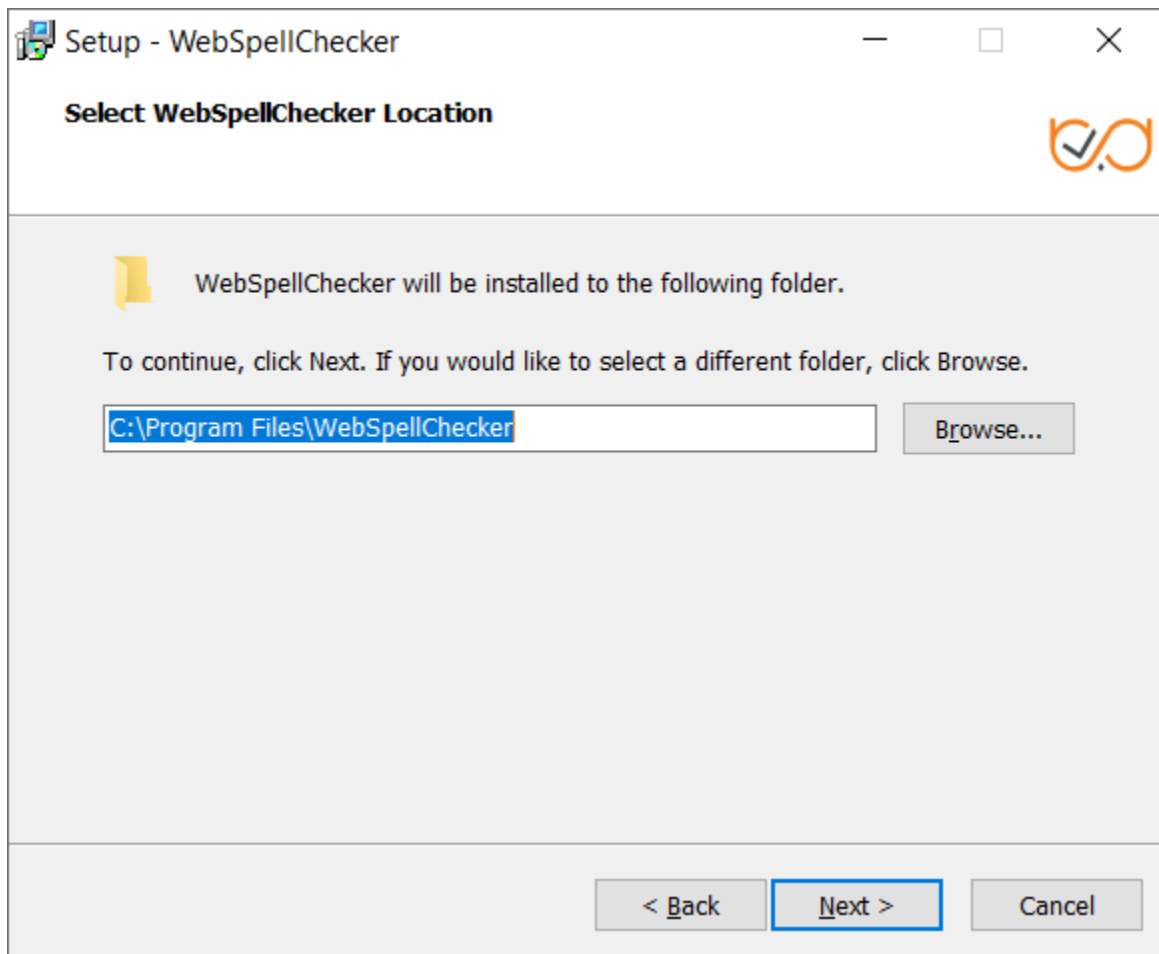
2.2. Before proceeding with the installation, read and confirm **WebSpellChecker Software License Agreement**.



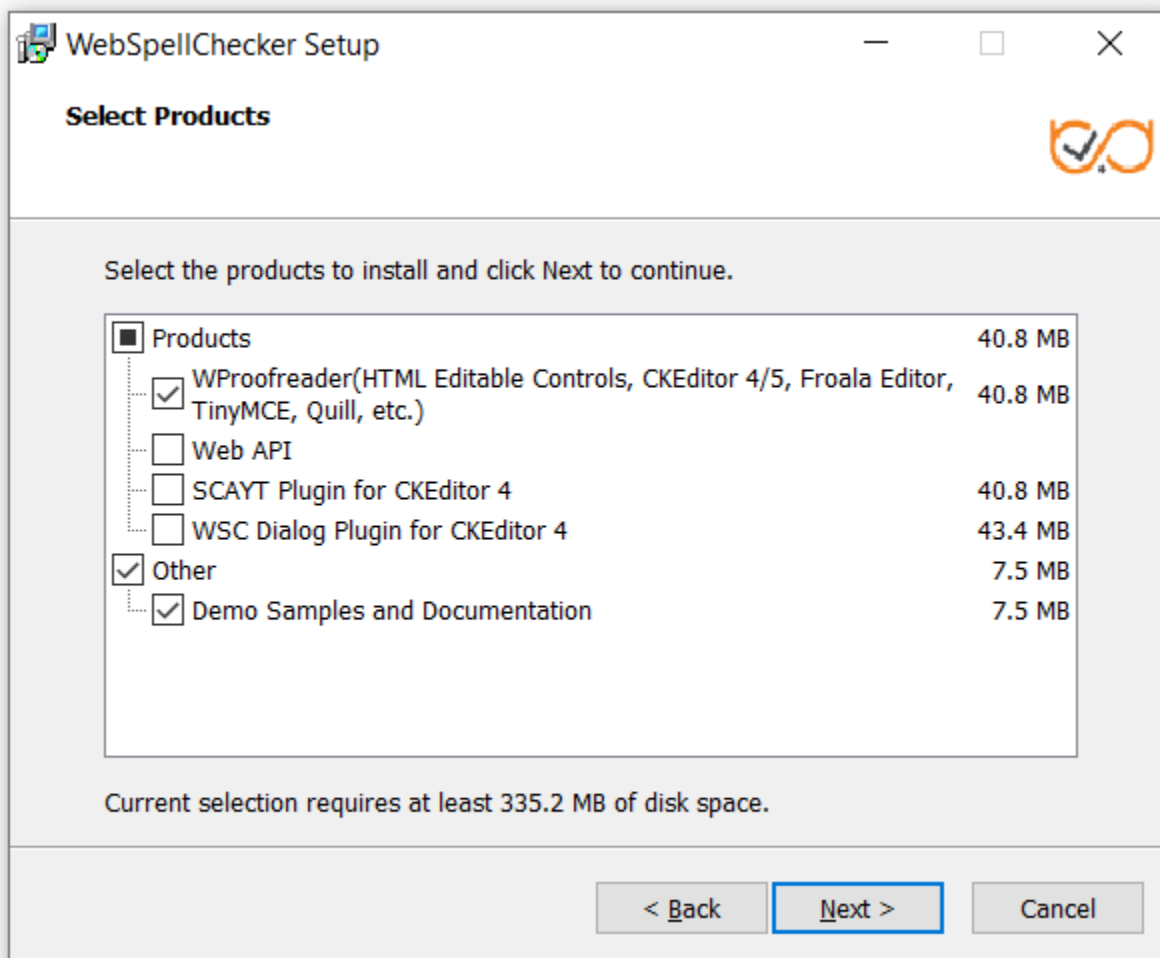
Visit [WebSpellChecker Software License Agreement](#) page to acknowledge with the full terms and conditions of WebSpellChecker Software.



2.3. Select WebSpellChecker installation location and click **Next** to proceed. The default WebSpellChecker installation folder is **C:\Program Files\WebSpellChecker**. Click **Browse...** and specify a different installation location if it is necessary.

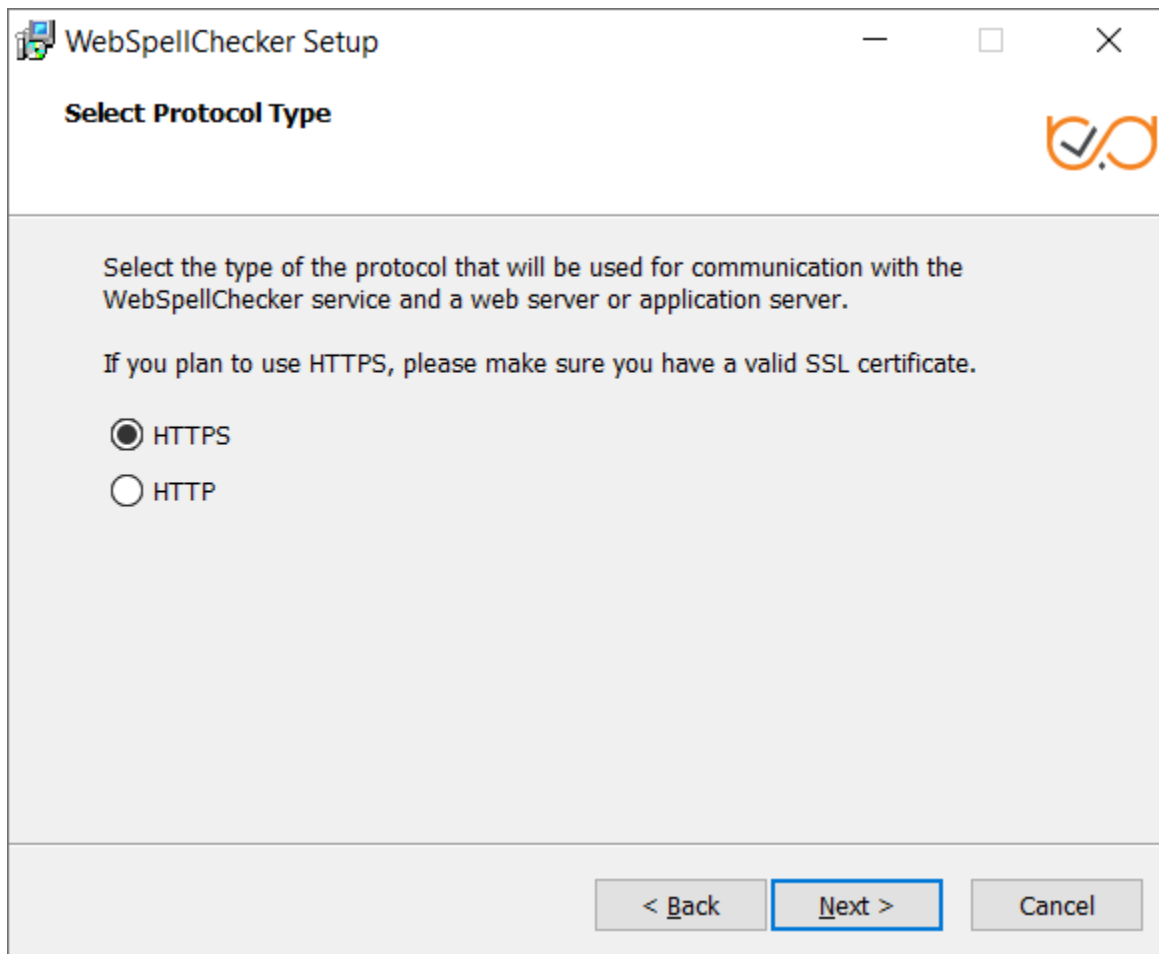


2.4. Select the products to install and click **Next** to proceed. By default, WProofreader as well as Demo Samples and Documentation are installed.



If you selected the WSC Dialog Plugin for CKEditor 4, all the requests and static files will be served by a selected web server or Java application server via the FastCGI protocol (SSRV.CGI component) which you need to enable later. For details, refer to [WebSpellChecker diagram](#) description. All other products communicate with AppServer directly and don't require any additional configuration and enabling FastCGI protocol.

2.5. Select the type of protocol that will be used for communication with the WebSpellChecker service and a web server or Java application server and click **Next** to proceed. By default, **HTTPS** is selected.



2.6. Specify the service port. The default port of AppServer is 2880. Press **Next** to proceed with the installation using port 2880.

WebSpellChecker Setup

Specify Service Port

Specify the service port (by default: 2880). If you prefer to use a custom port, make sure it is not in use by another service.

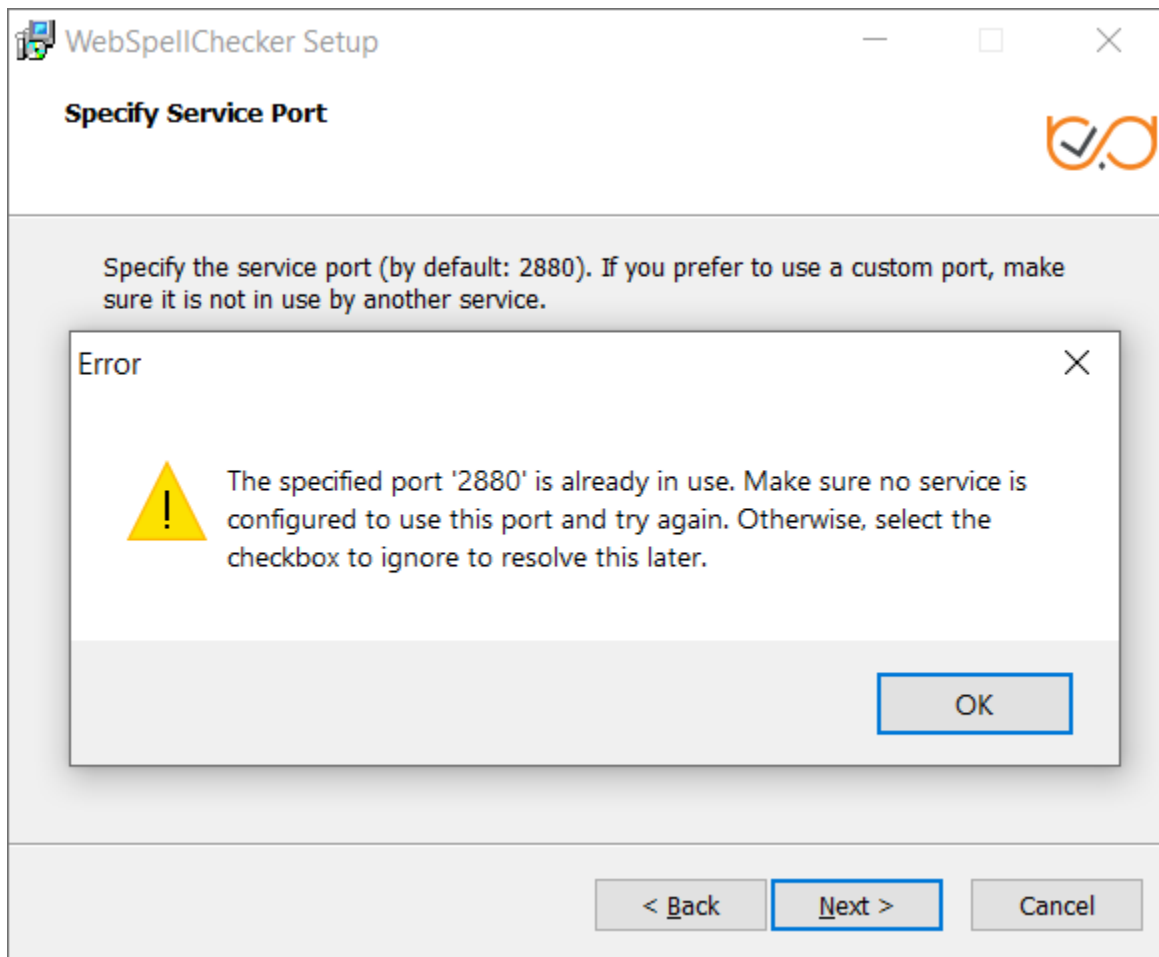
2880

☒ Ignore and use this port even if it is in use.

You have an option to use the specified port for the setup even if it is in use by another service. However, you will be required to manually resolve the issue.

< Back Next > Cancel

If the port is already in use, the following error message appears.



To continue the installation under the port 2880, press **OK** and select the **Ignore and use this port even if it is in use** option.



If you also have an installation of WebSpellChecker Server on the same server, and AppServer is running under the port 2880, you need to select a different unused port (e.g. 2881) for this installation.